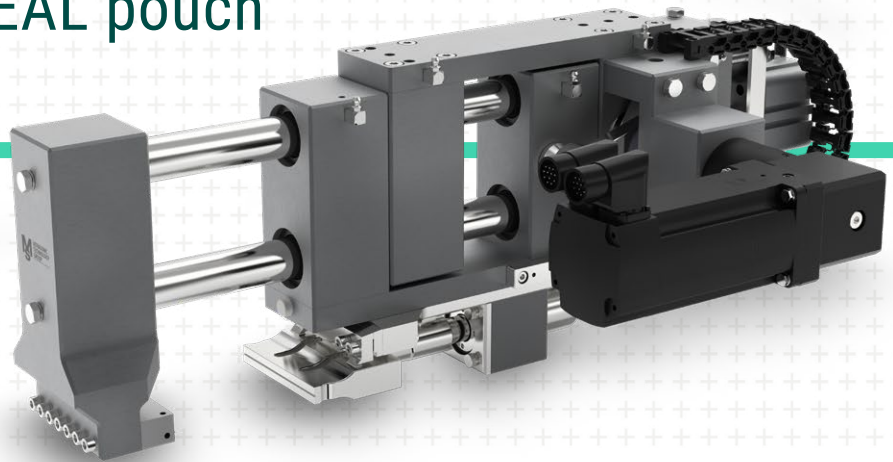


FOCUS ON THE SYSTEM

Module for top seam sealing: MS sonxSYS SEAL pouch



The requirements for sealing films, especially in the food industry, are high. With the MS sonxSYS SEAL pouch ultrasonic module, MS Ultrasonic guarantees you a precise seam design, which can be either firm or peelable, for top seams on three- and four-side sealed pouches as well as stand-up pouches for applications with films but also paper composites and nonwovens. The electro-pneumatically driven module is completed by the fully digital continuous sonic generator MS sonxGEN, a resonant unit as well as an anvil.

The top seam sealing module can be integrated into different variants of packaging lines – e.g. HFS (horizontal fill-seal system).

BENEFITS

- + Compact, easy-to-integrate module, versatile adjustment and alignment options, can be washed-down
- + Modular delivery capability from the components to the complete system
- + Pure recycling of the welded workpieces (in the case of single-material packaging), as joining is done without adhesives and solvents
- + Environmentally friendly technology, as it is more energy-efficient and faster compared to thermal processes, Industry 4.0 standards in communication
- + Reproducible welding quality with distance sensor for gap control and contact switch-off
- + No heat influence on the product to be packaged due to cold welding tools, significantly reduced film shrinkage
- + Also ideally suited for new multilayer monolaminates
- + Tight sealing also possible in case of a contaminated sealing area
- + Flexible seam design and minimal seam protrusions



APPLICATION EXAMPLES

Piece goods:

- + Nuts
- + Envelopes
- + Salami sticks
- + Grated cheese
- + Teas
- + Dried fruit
- + Pasta

Powdery filling materials:

- + Salts
- + Washing powder
- + Spices
- + Soups
- + Sauces

Highly viscous filling materials:

- + Smoothies
- + Moist pet food
- + Food supplements

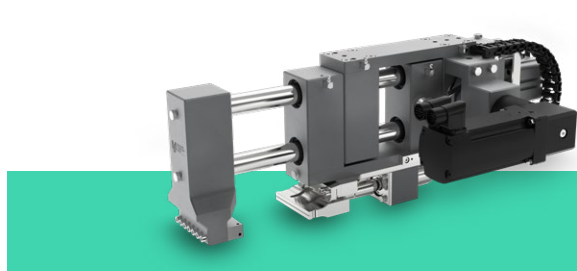
Fibrous filling materials:

- + Sauerkraut
- + Red cabbage
- + Salads

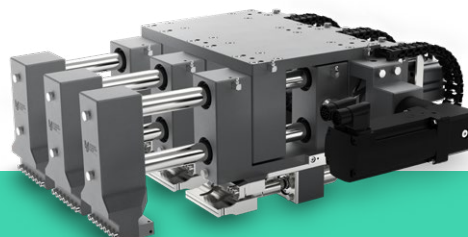
Liquid filling goods:

- + Drinks
- + Coffee drinks
- + Oils
- + Juices

VARIANTS



Individual module



Multiple module (can be extended as required)

SEAM DESIGN



Three-side sealed pouch



Stand-up pouch

TECHNICAL DATA

Operating frequencies	20 kHz, 30 kHz, 35 kHz
Power	1,000 W, 2,000 W, 4,000 W peak power
Welding force	250 – 1,100 N
Stroke length	50 mm, 100 mm
Drive	electropneumatic, servo-electric
Parameterization	Amplitude, force
Process control	Power
Module weight	approx. 30 kg
Dimensions (WxHxL)	100 x 252 x 673 mm
Installation situation	horizontal
Sonotrode material	Titanium (coated)
Anvil	exchangeable; titanium (coated), steel (hardened)

OPTIONS

MS sonxANA Software	Fast on-site analysis and parameterization on a Windows-enabled tablet or notebook computer
Interfaces	ProfiNet I/O, EtherNet I/P, EtherCAT

